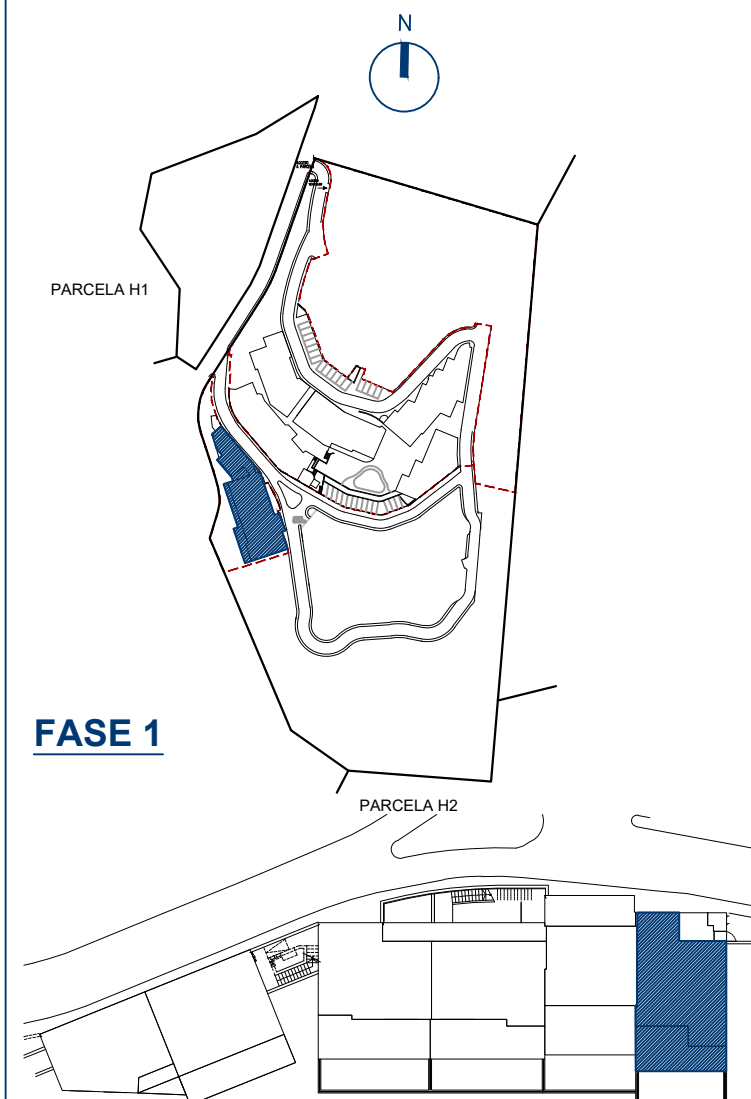
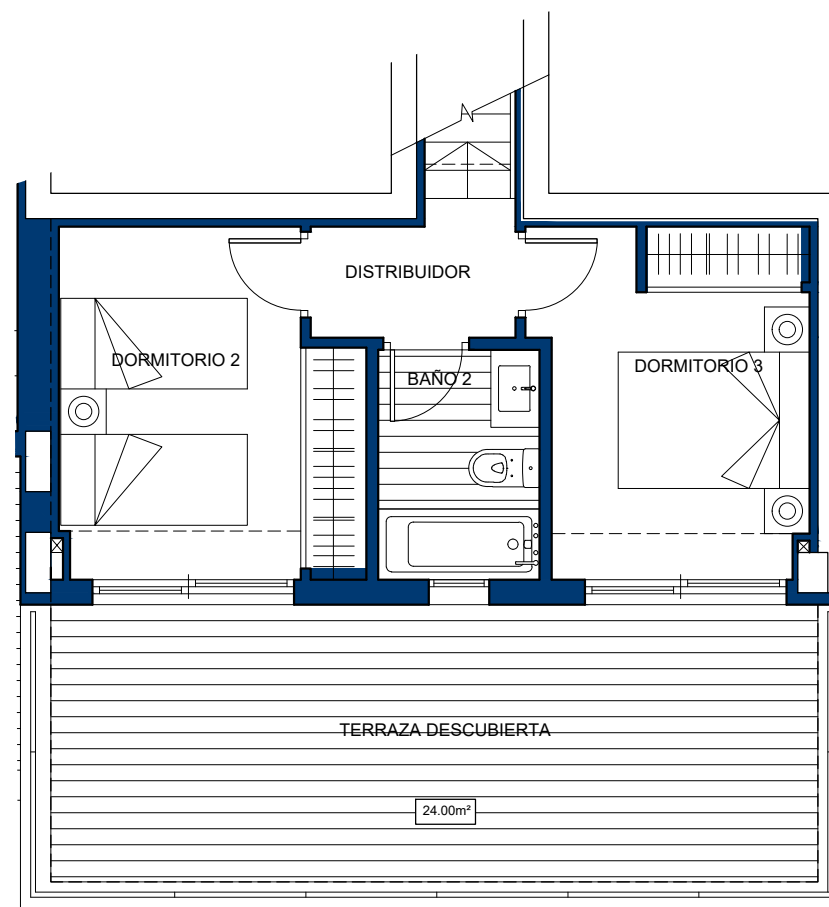
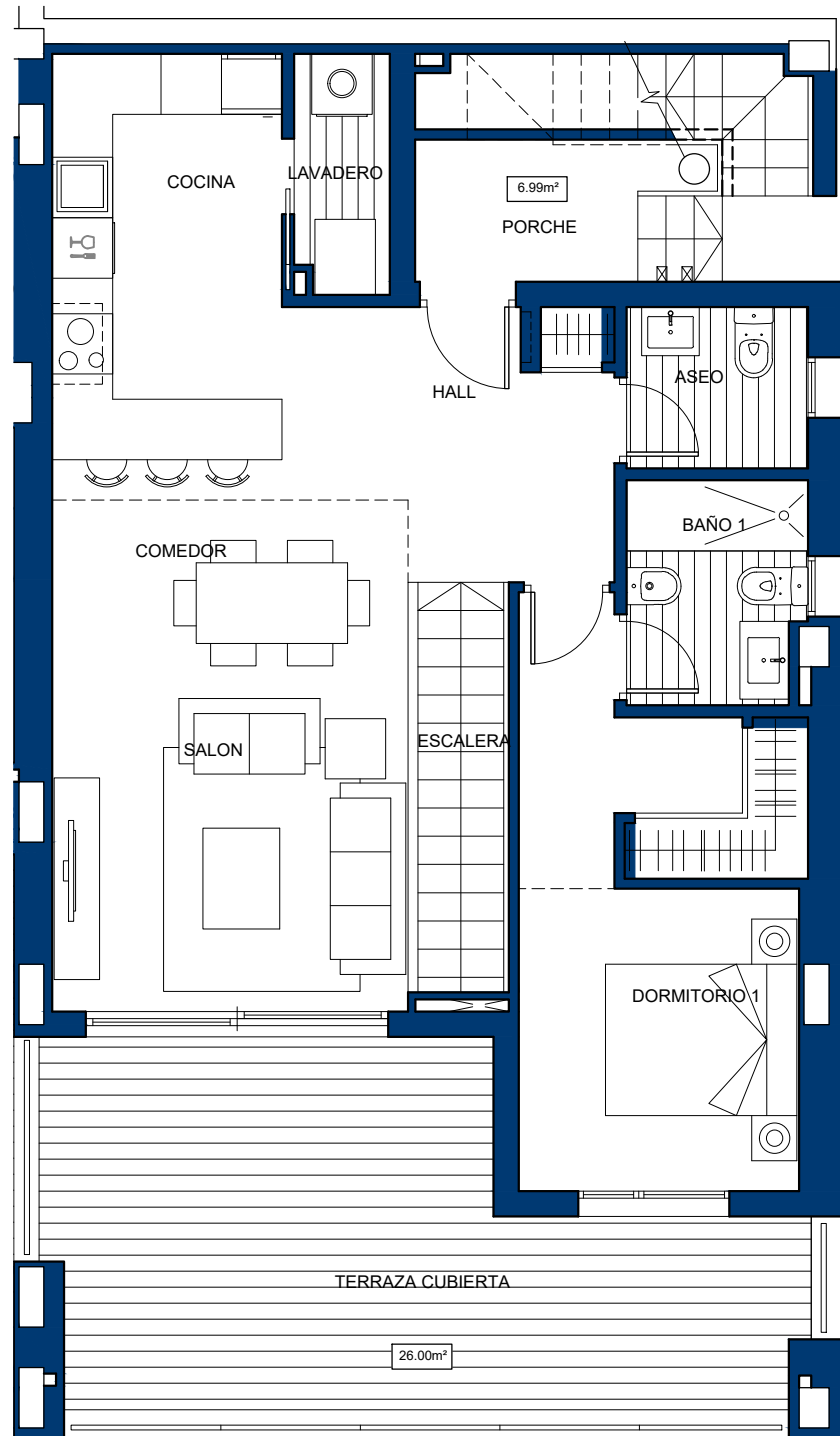
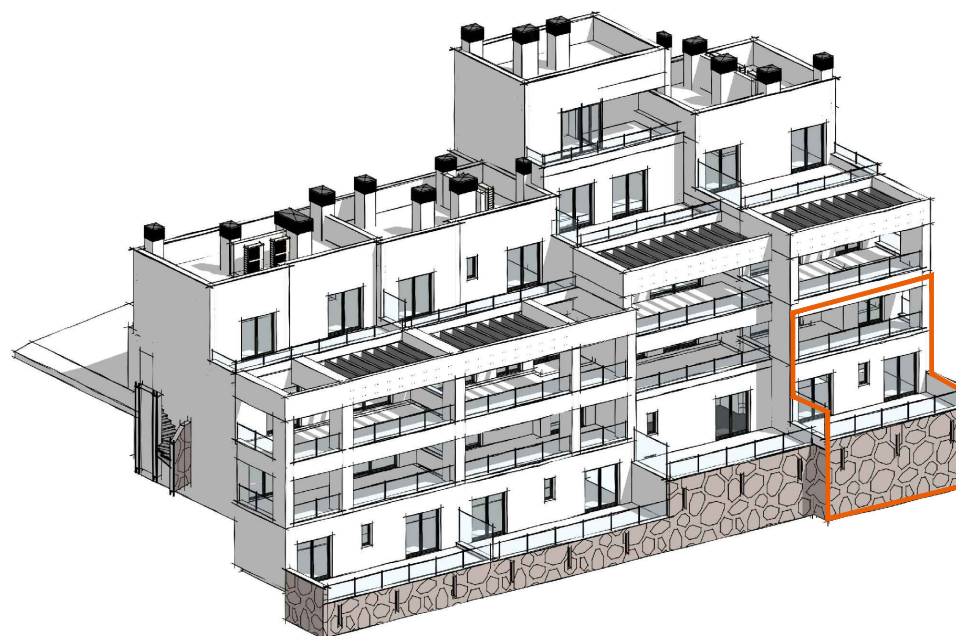


VIVIENDA N°49



FASE 1

BLOQUE 5-N

CUADRO DE SUPERFICIES

Hall	5.53m ²
Cocina	9.18m ²
Lavadero	2.21m ²
Salón- Comedor	21.15m ²
Aseo	2.88m ²
Dormitorio 1	14.41m ²
Baño 1	3.83m ²
Escalera	4.28m ²
TOTAL ÚTIL PLANTA ALTA	63.47m²
Distribuidor	2.23m ²
Dormitorio 2	9.80m ²
Dormitorio 3	9.10m ²
Baño 2	3.65m ²
TOTAL ÚTIL PLANTA BAJA	24.78m²
TOTAL ÚTIL INTERIOR	88.25m²

CONSTRUIDA VIVIENDA	107.11m²
CONSTRUIDA TERRAZAS / PORCHE	56.99m²

CONSTRUIDA TOTAL	164.10m²
-------------------------	----------------------------

UTIL BOJA ⁽¹⁾	97.08m²
CONSTRUIDA BOJA ⁽¹⁾	126.57m²

PLANTA ALTA

Escala 1 : 75

1 m 2 m 3 m 4 m 5 m 6 m 7 m 8 m 9 m 10 m

PLANTA BAJA